

CampDraft Records & Scoring System. for Windows

Copyright R. Conibear (2004)



Author:

Richard Conibear
Possum Gully Software
PO Box 1444
Mona Vale NSW 1660
Australia

Email: Richard@possumgully.net
Tel: 0408 669697

Introduction.

This software package has been written to assist Show Societies who run Camp Drafts. Experience has shown that it is very time consuming for the committee to organise a draw for each event, print the draw for display at the ground, organise a second draw when multiple rounds are needed, work out who won etc. etc. The author of this software has been involved in these committees, and thought it was time a computer was brought into action to assist with the whole process.

This has left committee members with more time to organise the practical logistics of running events, because the office work load has been greatly reduced.

Computer Hardware.

The software runs on IBM compatible computers. The more powerful the computer is, the better the software will run. Anything with the power of a 486 DX4-100 computer or greater (e.g. Pentium) would be quite satisfactory. About 7 megabytes of hard disc space is needed. A good quality printer is also needed to print out draws, results, etc.

The software is designed to run under the Windows operating system on a PC. For the technically minded, the software is written using Visual Basic 6. The Database is in Microsoft Access 2000 format. Most of the reports are generated using Crystal Reports.

The actual database is called C:\PROGRAM FILES\CAMPDRAFT\DRAFT.MDB

Summary of the functions of the software.

1. Enter the Competition Name, and the names of the Events you are going to run. You can also enter Event Entry Fees against the Event Names.
2. Enter details of each Rider, and the horses (s)he has entered by event. Specify ASH and AQHA numbers where relevant. These can be entered in any sequence.
3. Entry Fees for each rider will be calculated automatically as each horse entry is entered into the computer. You can also record the payment of entry fees.
4. Print RR No., ASH, and AQHA number lists.
5. Perform a draw for each event ("Primary Draw")
6. Print out the Draw for each event.
7. Make any minor adjustments to the draw, if necessary, to spread riders with multiple entrants in one event (although the system does this automatically as best as it can).

8. Re-print the draw (if necessary). Copies of these can be displayed in the Stock Camp.
9. Print out the Entrants "cards". Each card shows the Entrant's events and draw positions, and also Entry Fees owing. Fees paid can be entered against each riders name in the computer.
10. As events progress, scores are entered for Cut Out, Horse Work, and Course for each competitor in each Event. The computer automatically calculates total scores for each ride.
11. Print the results for any given event, which ranks competitors in sequence of scores.
12. For events with more than one round, perform a Second (or Third) Round draw. The computer will ask for the number of horses that are required for the next round. It will pick these horses in scoring sequence from the previous round.
13. Print the Second (or Third) Round draw.
14. As the next rounds are run, enter the scores. (Proceed again from paragraph 10)

Installing the software on your computer.

You will receive a CD ROM that contains the programs that constitute the system. The CD is a 'master' copy. You must install it onto your hard disc before filing the master copy away in a safe place. Do this as follows:

Installing the system under Windows.

- Mount the CD-ROM into the disk drive.
- If your system is set up to automatically run CDs when they are loaded, just wait for the installation to start.
OR
- click the mouse on **Start**, then click on **Run**
- type **D:\SETUP** if you are using the CD-ROM. The installation process will now run. (Assumes D: is your CD drive).
- The system will ask for the name of the hard disc directory where the program is to be installed. Accept the default offered, which is **C:\Program Files\CampDraft**. The programs and files will now be copied onto the hard disc.
- If you receive any messages about bringing your computer's internal files up to date, allow the updates to occur. **However** do not allow your computer's files to be updated with older version files coming in from the discs. If this process requires you to re-boot your computer, do so.

If you receive any messages about "Access Violation" you will have to tell the computer to ignore them.

Setting up a Windows "Short Cut".

Click on **Start** in your Task Bar, then **Programs** (or **All Programs**). Point at **CampDraft** with your mouse. This will show an extension, also labeled Campdraft. Right Click on this extension, and then left click on the **Send To** option. Then left click on **Desktop (create shortcut)**. This will put a Short Cut icon on your desktop, from which you can start the system.

Starting the system.

Double click your mouse on the CampDraft shortcut icon on the Windows Desktop that you set up above. OR : click on **Start**, then **Programs**, then **CampDraft**.

Main system MENU

The Main System Menu contains a list of all the main functions that can be performed by the system. Here is what will be initially displayed when you start the system.



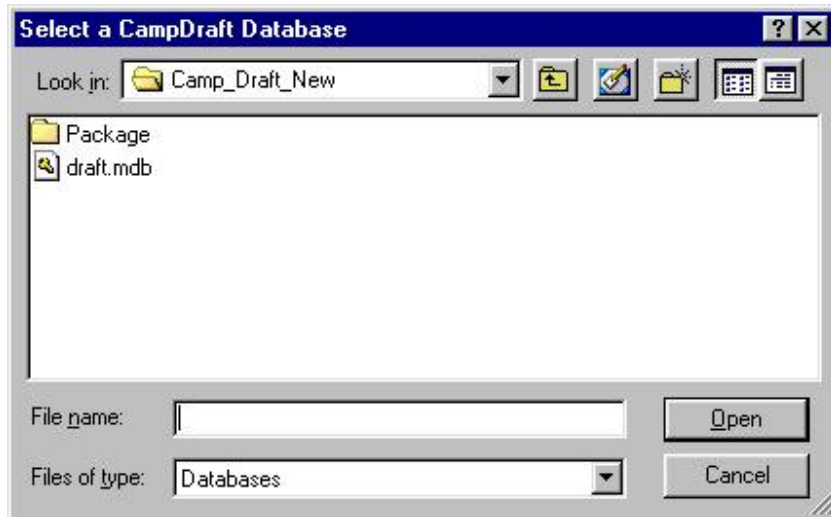
You can click your mouse on the Command Buttons on the screen to start any of the main functions of the system, and you can use the traditional Windows Menu along the top of the screen.

Help

Whenever you want Help when using this system, just press the F1 function key. A Windows Help screen will appear describing the system function you are currently using.

Selecting a Database.

The system will always start up using the “default” database, which is called DRAFT.MDB.



If you want to access a different database, click on Select Database from the File menu at the top of the screen. Use the Windows File dialogue to specify which database you want to use. This may be a Backup version, for example.

You can also create a new database from this dialogue. To do this, type in a new File name near the bottom of the file display. e.g. DRAFT01.MDB

A new database will be created under the same competition name, with all look-up tables etc included. You can now start to add Entrants to this new database. This new database will bear no relation to other existing databases.